

CRANE®

brands you trust.



CRANE ChemPharma Flow Solutions™ - Overview

www.cranechempharma.com

**CRANE ChemPharma:
your business partner
that offers trusted
brands and flow solutions
on a local level worldwide.**

*Crane ChemPharma Flow Solutions™
ist ein Firmenzusammenschluss, der die
Marken XOMOX®, Saunders®, DEPA®, ELRO®,
Revo® und Resistoflex® umfasst.*

*Mit sicheren, zuverlässigen Produkten und
intelligenten Lösungen für das Fluid Handling
können sich Kunden auf uns als
wertschöpfender Geschäftspartner auf
regionaler Ebene weltweit verlassen.*



TOM POZDA, PRESIDENT

CRANE ChemPharma Flow Solutions™
is the global integration of trusted brands
DEPA®, ELRO®, Revo®, PSI®, Resistoflex®,
ResistoPure®, and Saunders®, XOMOX®.

Together, we present our customers with
a strong portfolio of proven products
and complete fluid handling solutions,
within the chemical, biotechnology, and
pharmaceutical industries.

As one CRANE ChemPharma Team, we offer
innovative technology, financial stability,
best practices, and we improve customer
satisfaction by delivering a superior
customer experience.

Crane ChemPharma Flow Solutions™

DEPA®	ELRO®	Resistoflex®	Revo®	Saunders®	XOMOX®
Double Diaphragm Pumps	Peristaltic Pumps	Lined Pipe, Hoses, & Fittings	Valve Actuators	Diaphragm Valves	Valves and Actuators

QUICK FACTS ABOUT CRANE CO.

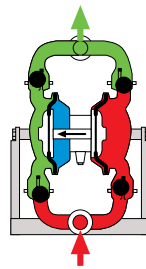
- > Building Sustainable Value SINCE 1855
- > Listed on the New York Stock Exchange since 1936
- > 12,000 employees, across 25 countries
- > Committed to lean, operational excellence
- > Integrity, performance with trust and respect, are the basis of our business system



Air Operated Double Diaphragm Pumps

For over 40 years the DEPA brand has earned its reputation for manufacturing high quality positive displacement, air operated double diaphragm pumps for a wide range of industries.

DEPA-Druckluft-Membranpumpen werden für die problemlose Förderung abrasiver, feststoffhaltiger und viskoser Medien universell eingesetzt. Förderleistung: max. 43 m³/h bei 7 bar, Förderdruck: max. 7 bar, Feststoffgröße: max. 10 mm, Luftsteuereinheit: innen- oder außenliegend.



Cast Metal Pumps, Series M

DEPA air operated diaphragm pumps made of cast metal have earned their well-deserved recognition through reliable service performance over decades in various industrial areas. World-wide installations on ships, at well-known ceramic manufacturers, in spray painting systems in the automobile industry, and in mining, are some of our many varied applications.

Plastic Pumps, Series P

Series P, made of mechanically manufactured or specially injection moulded plastic parts was designed for problem free pumping of corrosive and abrasive media in galvanic applications, in the chemical industry, and in mechanical engineering.

Stainless Steel Pumps, Series L

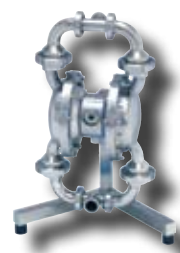
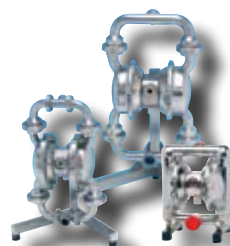
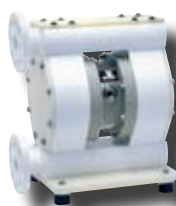
Food Line

Series L are made of extra-bright polished stainless steel developed for applications in the food, pharmaceutical, cosmetic and beverage industries.

Stainless Steel Pumps, Series L

Aseptic Line certified by EHEDG

For a variety of applications in sterile processes, and indispensable in the pharmaceutical and health care industries. The pumps conform to 3A and FDA guidelines and are certified by EHEDG. (European Hygienic Equipment Design Group)





Main Applications: Automobile industry · Beverage industry · Bio-technology · Breweries · Building industry · Ceramic and porcelain industry
Chemical industry · Dairies · Food industry · Galvanic and coating · Health care industry · Medical applications · Mining · Paint and varnish industry
Pharmaceutical industry · Plant and mechanical engineering · Power stations · Waste disposal technology · Waste water industry



ELRO Peristaltic Pumps

For over fifteen years ELRO peristaltic pumps for mobile and industrial applications have been indispensable in the positive displacement pumps market, serving industries such as the chemical, building, environmental and power.

ELRO-Schlauchpumpen, erhältlich in mobilen und stationären Ausführungen, haben sich als unentbehrliche Spitzenprodukte für die Industrie auf dem Verdrängerpumpensektor etabliert.



Series IP

The IP series of ELRO peristaltic pumps are intended for transport of liquid or viscous media, and are capable of handling abrasive, shear-sensitive products with long fibres and solids.

Series XP

The newly developed ELRO peristaltic pumps, series XP, are characterized by a high pumping capacity at low rotary speed. The amply dimensioned cross-section of the hose enables the transport of fluids with high solids content.

Series M 300

Mobile, compact general purpose pumps with high suction capacity and outstanding flow rates. Year after year, this unique, patented pump system continues to deliver results world-wide in a growing array of applications, including transfer of slurries, chemicals and contaminated media.

Series GP20/10 EX and GUP3-1,5

Specially equipped to be used during accidents involving hazardous materials for the collection of escaped viscous or contaminated liquids, the DIN 14427 approved GUP3-1,5 pump for hazardous materials can be combined with the ELRO disposal system.





Main Applications: Breweries · Building industry · Ceramic and porcelain industry · Chemical industry · Colour and painting industry · Construction industry · Cosmetic and pharmaceutical industry · Environmental technology · Food and beverage industry · Forwarders · Galvanic industry · Power stations · Ships and port facilities · Tank cleaning · Waste and disposal industry · Waste water plants

RESISTOFLEX®

Lined Pipe, Fittings and Flexible Products

Resistoflex corrosion-resistant plastic lined pipe, fittings, and Teflon® coated chemical hoses are used in corrosive fluid services as an economical alternative to expensive alloys.

ResistoPure™ is a brand of products offered by Resistoflex for the Biotech, Pharmaceutical, Food & Beverage, and Cosmetics industries. The ResistoPure brand differs from traditional Resistoflex fluid handling components in that products and processes are designed to meet the critical needs of the sanitary and aseptic markets.

PSI® offers solutions for the chemical, energy, paper, steel and pharmaceutical industries.

Resistoflex bietet nun schon seit über 50 Jahren korrosionsbeständige kunststoffausgekleidete Rohre und Fittings. Die Kombination aus der Festigkeit des Metallgehäuses und der chemischen Resistenz der Kunststoffauskleidung macht Resistoflex zu einer ökonomischen Alternative zu teuren, exotisch legierten Rohren.



Flanged Plastic-Lined Pipe

Resistoflex plastic lined pipe is made with a locked-in liner to minimize the adverse effects of differential thermal expansion between the liner and the steel. Sizes 1"-24"

CONQUEST® Plastic-Lined Pipe

CONQUEST® Pipe is designed to minimize the number of flanged connections in the process line.

MULTI-AXIS®

Precision bent piping custom made per customer drawing.

Plastic-Lined Fittings

Thousands of differently shaped plastic lined fittings according to DIN and ANSI specifications.

Valves

Four different types of valves for corrosive services.

Special Shapes

Fabricated and rotationally lined custom fittings and small vessels.

Dip Pipes, Spargers, Mixing Tees

Available in steel lined and jacketed in PTFE designed for agitated vessels.

Sight Indicators

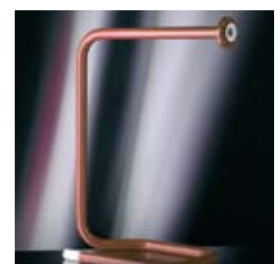
Resistoflex PTFE-Lined Bull's Eye sight flow indicators are used to observe the fluid and flow characteristics.

Expansion Joints

Made of contour moulded PTFE, providing exceptional corrosion resistance and flex-life.

High Integrity Flange (HIF)

Designed to improve the performance of plastic-lined pipe joints.





Main Applications: Breweries · Building industry · Chemical industry · Colour and painting industry · Construction industry · Disposal technology · Environmental technology · Food and beverage industry · Forwarders · Galvanic industry · Pharmaceutical industry · Port facilities and skimmer · Power stations · Ships · Tank cleaning · Waste and disposal industry · Waste water plants



Valve Actuators

The Revo brand is the standard for excellence and performance in actuator technology and is widely recognised in the process industries as a leader in quality and innovation.

That innovation is paired with a manufacturing excellence to drive advances in product technology. With our combined knowledge and experience we can offer the optimal actuator for a variety of applications.

Revo Schwenkantriebe dienen in erster Linie der Betätigung von Armaturen mit 90° Stellwinkel, wie zum Beispiel Kugelhähnen, Kegelhähnen sowie Absperr- und Drosselklappen. Revo Schwenkantriebe findet man aber auch bei sonstigen Anwendungen mit Drehbewegungen von 90°, 180° oder anderen Schwenkwinkeln. Die Revo-Schwenkantriebe können für Auf/Zu-Anwendungen oder als Regelantriebe verwendet werden.

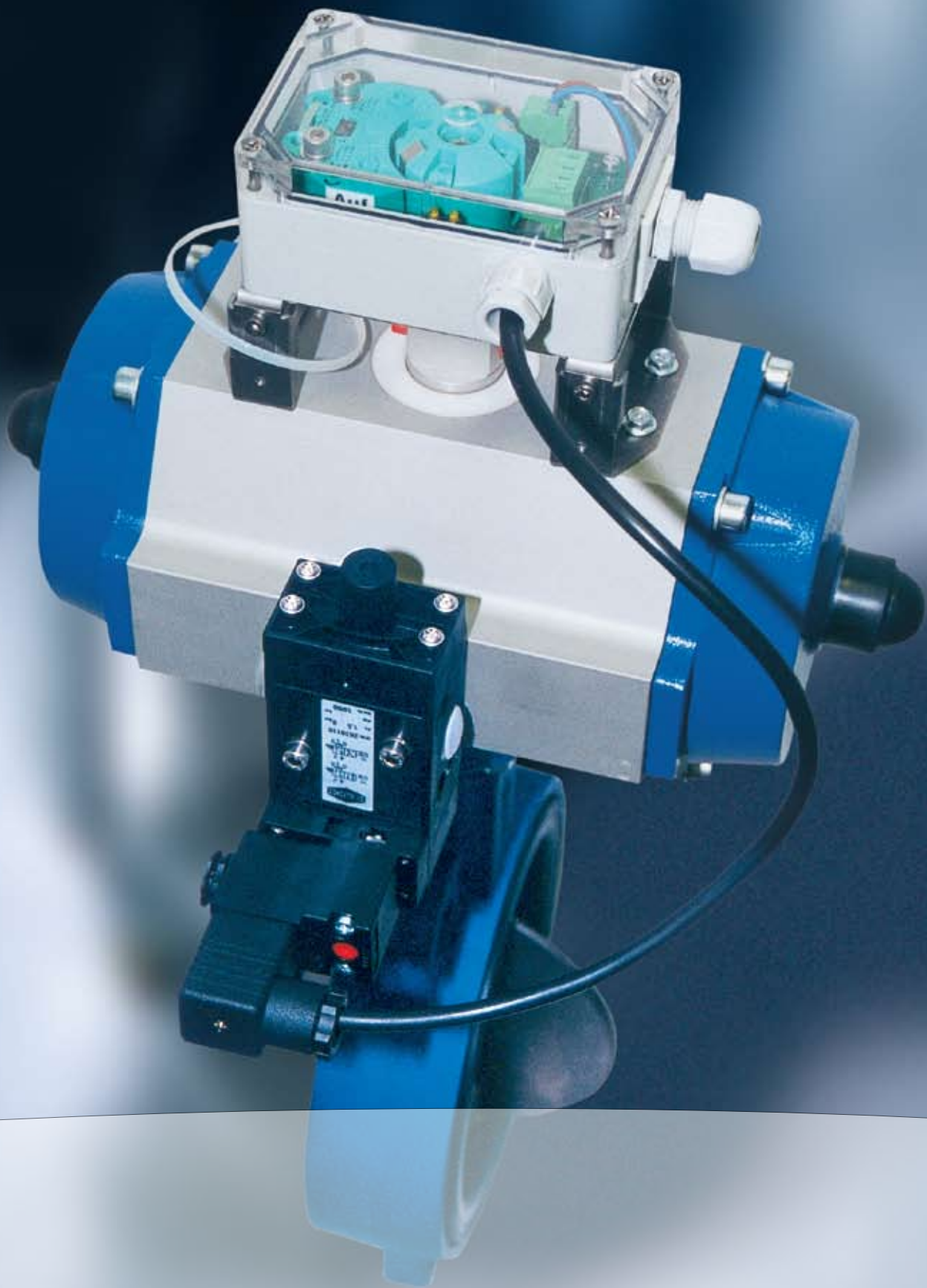
Quarter Turn Actuators

The Revo Series R range of actuators is ideal for operating quarter-turn valves - butterfly, ball and plug valves in particular. Typical applications are 90° or 180° rotary motion and Multiposition function.

Automation for Individual, Safe and Economical Function

We will take your specifications to select valve combinations of the appropriate type and combine them with the right pneumatic, hydraulic, and electric quarter-turn and linear actuators. The available selection of accessories ranges from NAMUR solenoid valves to interfaces for bus-systems.





Main Applications: Chemical manufacturing · Food & Beverage production · Power plants · Pulp & Paper · Petrochemical processing · Steel manufacturing · Sugar refining · Waste incineration production

Diaphragm Valves & Actuation Technology

Since P K Saunders invented the original diaphragm valve, Saunders has led the way in providing the highest standards of reliability, engineering and safety. The range has been continually expanded over 75 years through innovation in both design and new materials technology, and has secured its omnipresence in diverse industrial sectors. Beginning with our pioneering of forged bodies and compact thermoplastic actuators, and more recently having introduced bodies machined from a solid compound, including multi-port valve solutions, we also continue to lead in aseptic valve technology.

Saunders Membranventile gewährleisten viele Jahre störungsfreien und verlässlichen Betrieb, auch in anspruchsvollen Applikationen. Hauptbestandteil dieser Armaturen ist die Membrane. Seit mehr als 75 Jahren erforscht, entwickelt und produziert Saunders alle Membranen im eigenen Betrieb. Dies sichert eine Auswahl an Elastomer Mischungen zum Einsatz in korrosiven und erosiven Anwendungsbereichen.

Saunders Industrial Diaphragm Valves include:

Saunders A Type

Weir type design available with a versatile and cost-effective range of plastic and rubber linings offering the optimum solution for customers' needs in chemically demanding applications.

Saunders KB Type

Straight through design with a full range of rubber linings to handle abrasives and slurries. Offers an uninterrupted flow path critical for valve longevity.

Saunders WFB Type Valves

Utilizing the weir design, our WFB valve offers a long term service and trouble free operation to satisfy demanding requirements during critical periods, such as in fighting and extinguishing fires.

Saunders HC4 Diaphragm Valves for Bio-Pharm include:

Forged and Cast 2-Way Valves

Custom Fabricated Valves

Forged and Cast 2-Way Valves

Standard machined Block Valves

Custom machined Bio-Block valves

Manual & Automated Solutions





Main Applications (IDV): Chemical manufacturing · Food & Beverage production · Mining and slurries · Petrochemical processing · Power plants · Pulp & Paper · Steel manufacturing · Sugar refining · Waste incineration
Main Applications (HC4): Bio-Pharm · Pharmaceutical



Valves and Actuators

Since 1956 XOMOX has been manufacturing and marketing a complete product line of quarter-turn valve products, actuators and accessories. We supply sleeved plug valves, fully lined valves and accessories, metal ball valves, high performance butterfly valves as well as actuators and accessories.

Our products feature superior design, low maintenance, and extended life.

Seit seiner Gründung 1956 zählt XOMOX International GmbH & Co. zu den Marktführern bei der Herstellung qualitativ hochwertiger Industriearmaturen für vielseitige Anwendungen in chemischen und petrochemischen Anlagen, Pharmabetrieben, fossilen und nuklearen Kraftwerksanlagen, Papier- und Zellstofffabriken, Meerwasserentsalzungsanlagen und Offshore-Projekten.

Sleeved Plug Valves

On-off-valves, Multi-port plug valves, Jacketed and Control plug valves

High Performance Butterfly Valves

Wafer, Lug and Double flange Design with PTFE, FIRE TESTED and metal seats

Lined Valves

Plug and Ball Valves, Butterfly Valves, Sight Flow Indicators, Check Valves, Strainers & Filters

Metal Ball Valves

2-way and Multi-port Ball Valves in various designs, Special Customer Solutions, metal seats

Actuators & Accessories

Actuators and Accessories for Plug, Ball and Butterfly Valves

Triple Offset Butterfly Valves

Lug and Double Flange designs with graphite and stainless steel metal seat, FIRE TESTED

Custom Design Valve Solutions





Main Applications: Chemical • Desalination plants • Fossil fuel • Nuclear power generation plants • Offshore projects • Petrochemical
Pharmaceutical • Pulp & paper (Acetic Acid • Acrylic Acid • Chlorine • Fertilizer • Hydrochloric Acid (HCL) • Nitric Acid • Sulfuric Acid • TDI / MDI
•Titanium Dioxide)

Crane ChemPharma Flow Solutions TM
4444 Cooper Road Cincinnati, OH 45242 USA
Tel. + 001 513 745 6049, Fax +001 513 745 6093
www.cranechempharma.com

Heerdter Lohweg 63-71, D-40549 Düsseldorf, DE
Tel. +49 211 5956 0, Fax +49 211 5956 111

Von-Behring-Strasse 15, 88131 Lindau/B., DE
Tel. +(49) 8382 7020, Fax +(49) 8382 702144

CRANE[®]

ChemPharma Flow Solutions

Austria
Tel.: +43-2236-682-0
Fax: +43-2236-4353

Italy
Tel.: +39-039-2704-280
Fax: +39-039-2704-450

UAE
Tel.: +971-4-8864949
Fax: +971-4-8864950

Belgium
Tel.: +32-10-8184-44
Fax: +32-10-8184-58

India
Tel.: +91-20-26050922-26
Fax: +91-20-26050927

UK
Tel.: +44-163-348-6666
Fax: +44-163-348-6777



brands you trust.

CRANE ChemPharma Flow solutions Include: Pipe - Valves - Fitting - Actuators - Pumps

DEPA[®]

PSI[®]
LINED PIPING SYSTEMS

ResistoPure[®]

Saunders[®]
the science inside 

ELRO[®]

RESISTOFLEX[®]

revo[®]

XOMOX[®]

CP-AC-BU-EN-LI-11/09

Crane Co., and its subsidiaries cannot accept responsibility for possible errors in catalogues, brochures, other printed materials, and website information. Crane Co. reserves the right to alter its products without notice, including products already on order provided that such alteration can be made without changes being necessary in specifications already agreed. All their trademarks in this material are property of the Crane Co. or its subsidiaries. The Crane and Crane brands logotype (Xomox[®], Saunders[®], Resistoflex[®], Resistopure[™], PSI[®], DEPA[®], ELRO[®], REVO[®]) are registered trademarks of Crane Co. All rights reserved.